


Big Brother or Big Benefit?

A guide on the benefits of GPS tracking, to help you achieve successful implementation and buy-in from your employees - getting you the most out of Fleetpin and your people.



 0800 110 820

 sales@fleetpin.co.nz

 fleetpin.co.nz



fleetpin™

CONTENTS

1
INTRODUCTION

2
EFFICIENCY IMPROVEMENTS

3
HEALTH & SAFETY

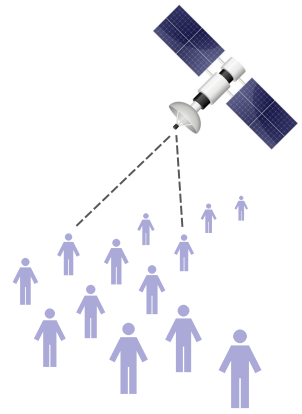
4
WHAT DOES THE LAW SAY?

5
SUMMARY

6
ABOUT FLEETPIN

01. Introduction

When people think of GPS tracking, often movies come to mind of satellites soaring overhead, sending private information to faceless government entities keeping tabs on citizens. Stereotypes like this reinforce the attitude that if a business owner decides to make use of GPS to track vehicles and machines, it's because they don't trust their staff and that they're spying on them.



If this is how employees view a GPS system, it's going to have a negative impact on the culture within your business. In reality, GPS tracking can be used to significantly improve business efficiencies and make life easier not just for business owners, but for their people too.



Improve risk
management



Increase
efficiency



Assist with
Health & Safety

It's essential that when you implement a new system or tool in your business that it is discussed with your staff. The trick for business owners is to share the benefits of GPS tracking - so we've put together this guide that will help to do just that.



02.

Efficiency Improvements

Improving efficiency is the most common reason for implementing GPS Tracking. It's aimed at providing better management of a business's fleet, the people who operate them, and those who administer them.

Here are some of the ways GPS tracking can improve efficiency:

1. Increased productivity

Employees' time is no longer wasted trying to remember how long they were on a job, or how long it took them to get there. Data like trips, activity, engine, productivity, and duty time is instantly available to them wherever they are, via their smartphone or web browser, freeing them up to focus on their actual job.



2. Reporting Mileage

This is all recorded within Fleetpin, so there's no more having to figure it out from the speedometer or Google maps. Too easy!



3. Off-road RUC

There's no need to keep track of off-road travel, Fleetpin handles that as well! This also assists when applying for RUC refunds for off-road vehicle usage.



4. Real-time tracking

Designated users can look back over an employee's job history and immediately see where they were at any given time. This not only helps the admin team for time sheets, but for gathering informative data to identify productivity and operational trends and patterns.



5. Driver ID

Drivers can sign in/out using the Fleetpin mobile or web apps. With our optional RFID kit, drivers can use a special button to sign in and out of a vehicle. Driver ID allows detailed reporting by drivers across assets and locations and all incidents (speeding, harsh driving) are also linked to the driver, providing you the information needed to take corrective and preventative action.



03. Health & Safety

An important part of getting your employees on-board with GPS tracking is to assure them that their well-being is a critical consideration:

Being able to see where your staff are means you can respond faster if there's an accident or Fleetpin's harsh impact or braking alert is sent to a designated receiver; emergency services can be directed to the exact location.

If a job is taking longer than expected or staff hasn't shown up to the next job, a business owner can find out where they are.

There is also an SOS button option; if an employee pushes it, Fleetpin will text, phone and email the designated receiver.



Most businesses come with varying risks. If an employee hasn't been heard from, isn't answering their phone or is due elsewhere, GPS tracking allows you to instantly pinpoint their location and follow up accordingly.

04.

What does the law say?

It's possible when you're discussing GPS tracking with your team that you'll be asked what their legal rights are. The short answer is yes, business owners can legally use GPS as a tool to manage their fleet of vehicles and machines. That's the essential point; GPS is used to improve efficiency, not to keep tabs on employees.

It's important to have clear policies in place governing company vehicle and machine usage. This should include a statement about GPS tracking; what it's intended for and how it will be used. **Having clear work policy documents is essential for achieving this, including use of vehicles outside of work hours and how the data collected from the GPS will be used.**



The [Privacy Commissioner](#) has more information around the legalities of using GPS tracking in company vehicles online. Also, check out Fleetpin's [privacy policy](#) for some assistance in explaining the legality of GPS tracking.



05. Summary

Fleet Management systems like Fleetpin reduce risk and administration time, providing benefits to both employees and the businesses. And although it is not intended as a spy tool, it does have the knock-on effect of identifying any bad eggs. Their behaviour may instantly improve without you having to say a thing.



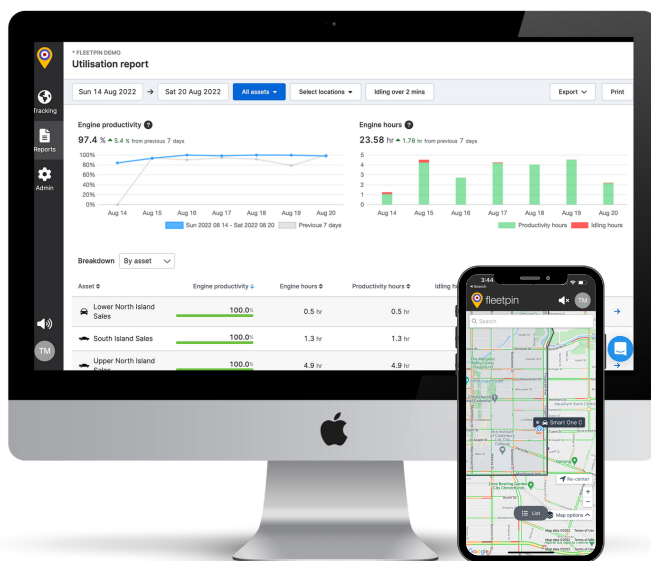
Take time to reassure staff that business efficiency is your primary goal with implementing Fleetpin.



Encourage feedback and for staff to come forward with any reservations they might have. Listen to people's concerns and take them on board.



Above all, stress that there are no trust issues involved (even if you do have reason to suspect distrust).



Generally speaking, the only people who tend to get upset about GPS tracking are staff who already aren't following the rules. Staff who are abiding by the rules tend not to be concerned, since it will not affect them negatively.

06.

About Fleetpin

Proudly 100% New Zealand owned and operated, Fleetpin is specifically designed to help Kiwi businesses manage the moving parts of their business.

Fleetpin is fast, intuitive and easy to use, so you can keep track of your vehicles, machinery and other business equipment anytime, anywhere.



Track assets in real-time



See where your assets have been



Make use of various maps



Automatically monitor events with alerts

Our Promise

- 1 A user friendly system that does basic business needs fast and reliably.
- 2 A solution that provides financial and operational benefits to businesses.
- 3 Exceptional local support and service to our customers, ensuring they get the best out of Fleetpin.

Getting Started with Fleetpin is Easy.

Start using Fleetpin and see the benefits for yourself.

Order your GPS devices

Install GPS devices

Access your Fleetpin

Start using Fleetpin!

GPS Tracking with no hidden 'gotchas'.



fleetpin™

Month to month subscription

Start, stop & pause at anytime

Customisable add-on's